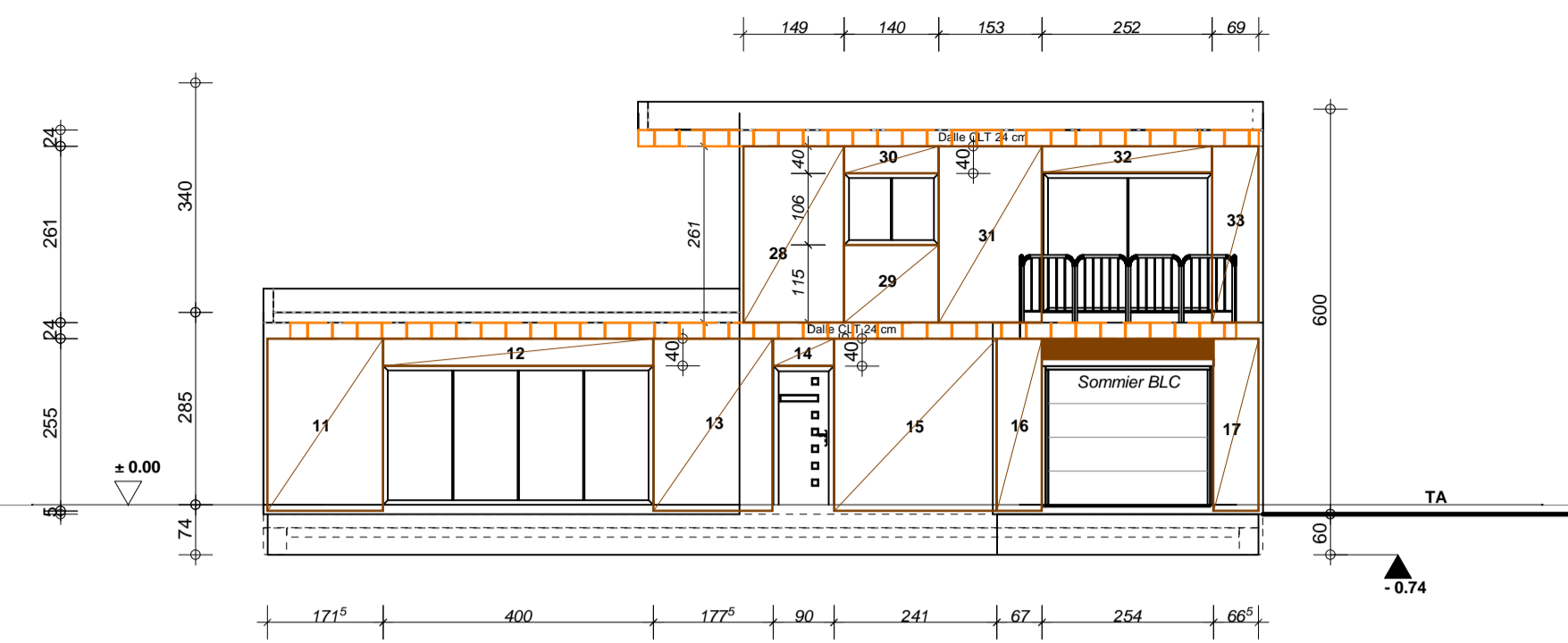
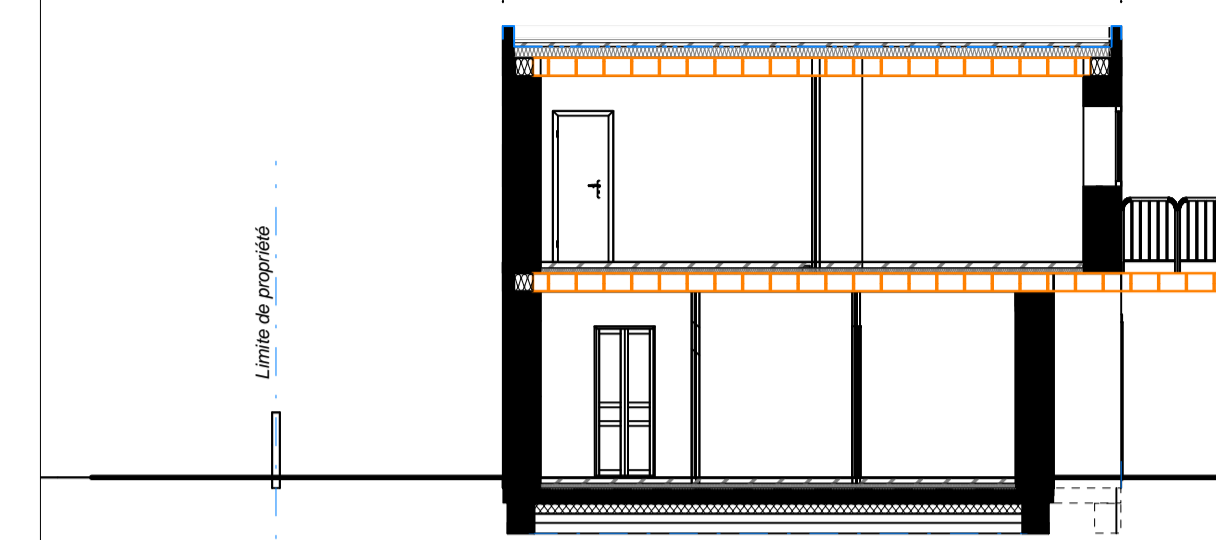


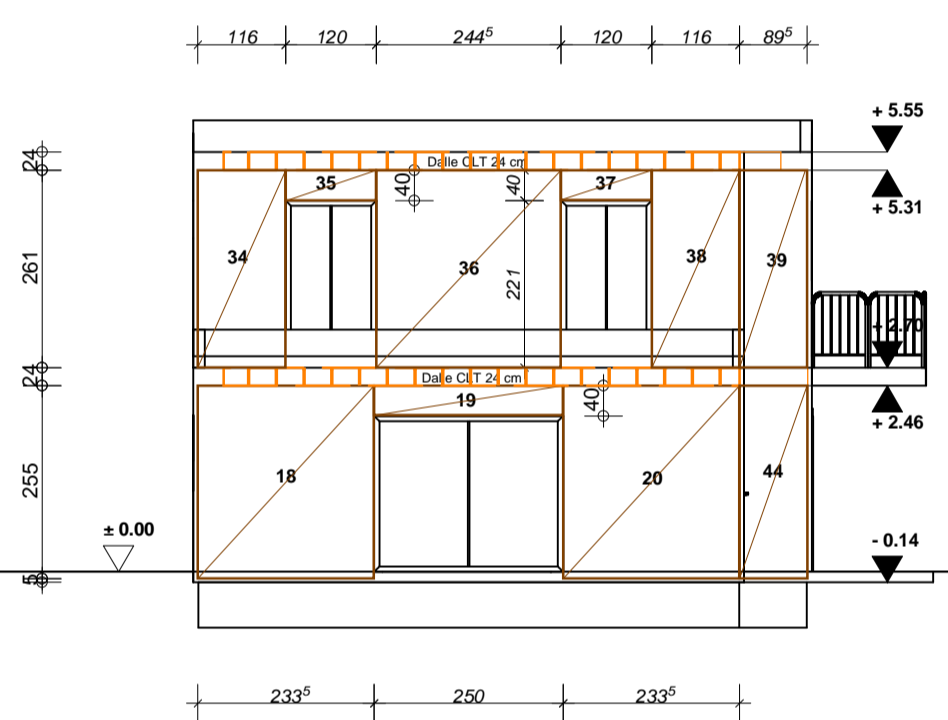
FACADE NORD-OUEST - 1:100
MURS ECOCOCON



FACADE SUD-EST - 1:100
MURS ECOCOCON



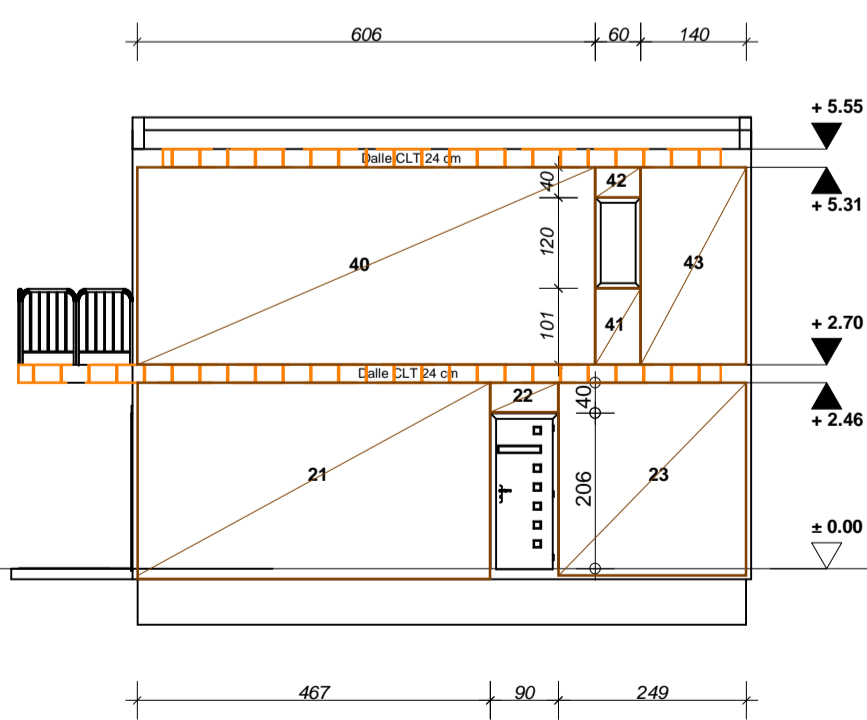
COUPE A-A - 1:100



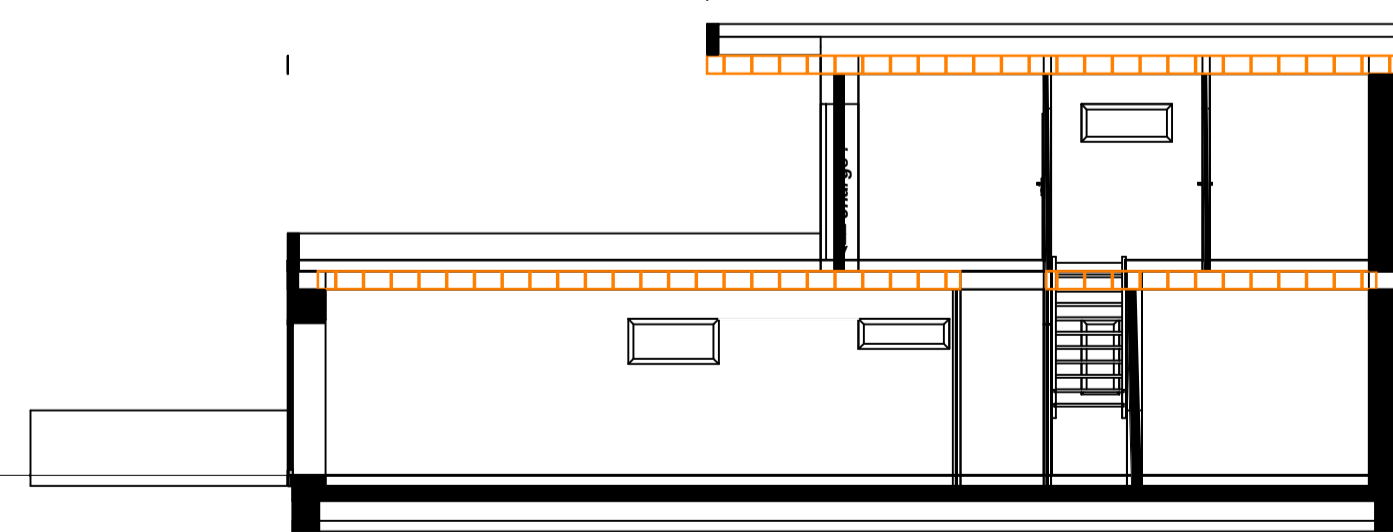
FACADE SUD-OUEST - 1:100
MURS ECOCOCON

RADIER
 . surface: 111.45 m²
 . périmètre 45.96 m1 (paregel)
 . volume béton: 22.29 m³

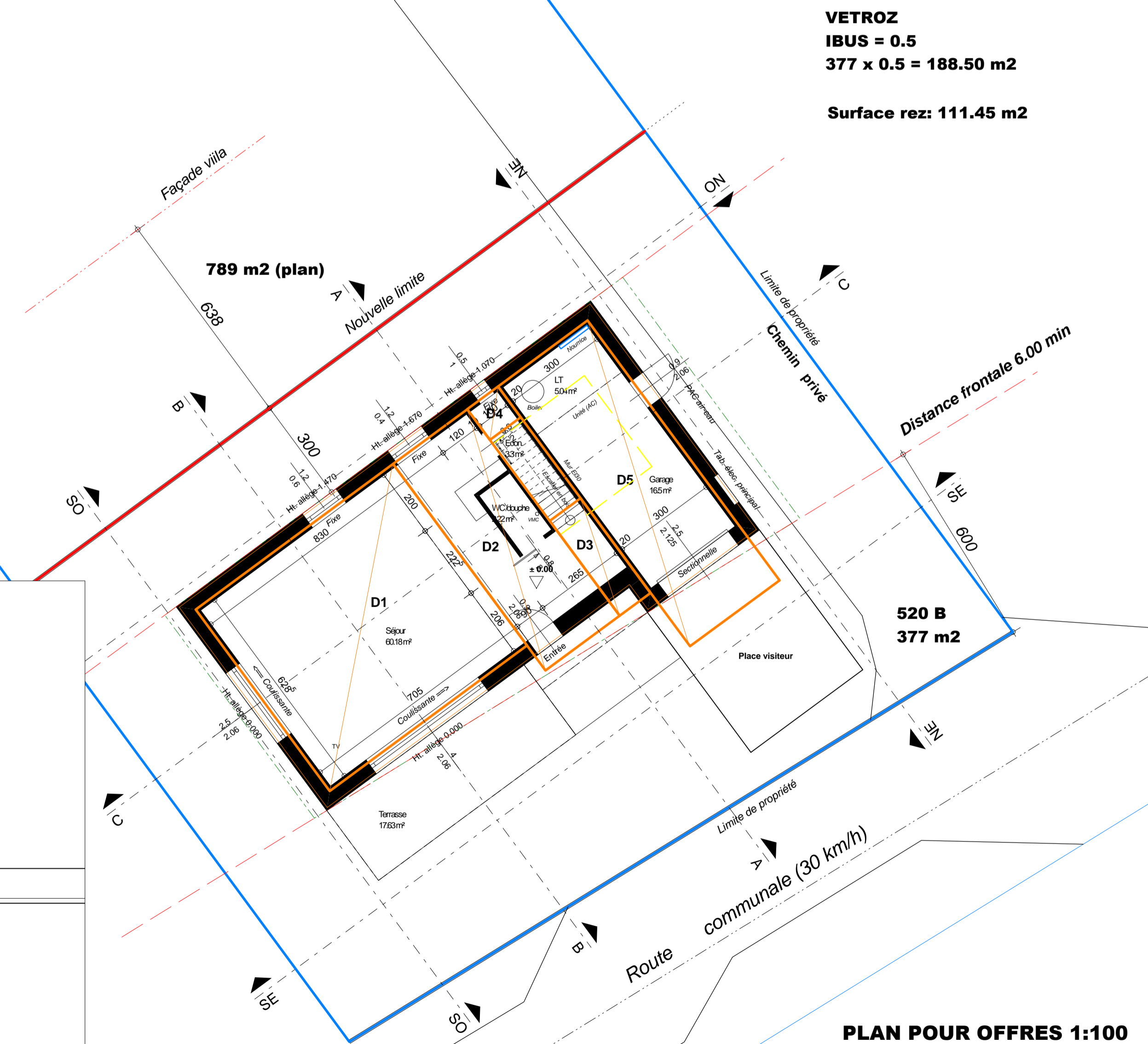
DALLE BOIS CLT 24 CM
 D1= 45.63 m²
 D2= 19.63 m²
 D3= 3.73 m²
 D4= 1.21 m²
 D5= 29.70 m²
 D1-D5 = 103.14 - 3.18 m²



FACADE NORD-EST - 1:100
MURS ECOCOCON



COUPE C-C - 1:100



VETROZ
IBUS = 0.5
377 x 0.5 = 188.50 m²

Surface rez: 111.45 m²

PLAN POUR OFFRES 1:100

Maître d'œuvre: IMMOCONCEPT-ARCHITECTURE,CH Architecture et ingénierie ETS La Sionne 9 - 1950 Sion - 079 466 61 78		Echelle: 1 : 100
Maître d'ouvrage: Mme Dora EVEQUOZ		Date: 06.03.2021
Projet: VETROZ - VILLA FAMILIALE		
Rez-de-chaussée		Note: 2021-101